



Promoters:



SS REALTY

1st Floor, "Marz Chambers", Falnir, Mangalore. Ph: +91 824 4262222
Web: www.landmarkinfratech.com | E-mail: info@landmarkinfratech.com



FOR ENQUIRIES CALL
888 066 2222



www.facebook.com/landmarkmng



twitter.com/landmarkmng



stay all around nature in a
palatial lifestyle...



landmark
GREEN
COUNTY
BOLAR MANGALORE



dreams are set in river banks!
you just follow them

landmark
GREEN
COUNTY
BOLAR MANGALORE

Luxury and Landmark are the two prime parameters that says a lot of things about your residential address. A wonderful location you never thought would be so nice to pamper yourselves, to live with the happy times and to enjoy the modern lifestyles.

You would witness an ethnic side of Mangalore untouched by the complications of modernity. "Landmark Green County" is two blocks of New Civilisation that sets apart the living from others at Bolar Main Road, Next to Post office. An easy commute to the city with all its fine points of shopping and entertainment easily accessible. Mangalore offers an immense choice in terms of quality educational, medical and professional colleges/Institutions. Its mouth watering coastal cuisine and glittering cultural mores are all the more attractive.

Landmark Green County is a conception from Landmark Infratech who have always planned the best landscapes and high-end projects well integrated with all the modern amenities. The two blocks of apartments will have in built Tennis court, Basket Ball, indoor games etc. A rooftop swimming pool will be a great refresher for good health including yoga and meditation. A choice 120 apartments spread over 15 floors will be magnanimously placed in a scenic surroundings of beauty and green perspectives.

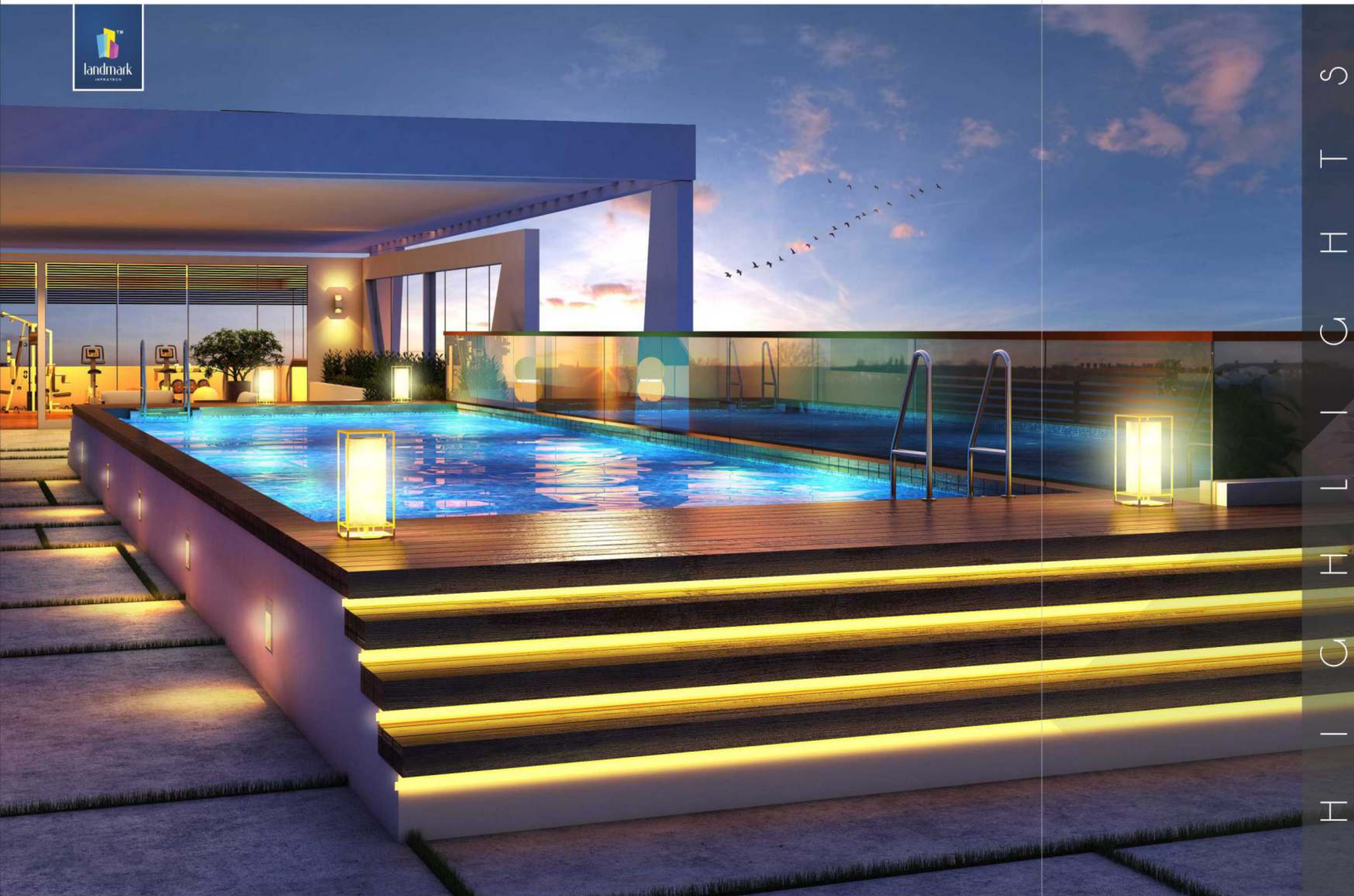


R O Y A L L O O K

Who is more **Royal?**

one who lives a
landmark lifestyle

When something is dreamlike you are short for words! Right from lounge to Tennis Court, Swimming Pool to Scenic backdrop, Yoga to youthfulness everything instils a feeling of positiveness. Amenities have a different perspective when it is designed and presented in a pleasant ambience. A palatial mood sets in to make you important. walk the royal path gracefully!



H I C H L I G H T S

- ▶ Roof Top Swimming Pool
- ▶ Fully Equipped A/c Health Club (Gym)
- ▶ Tennis Court
- ▶ Basketball Court
- ▶ Joggers Track
- ▶ Indoor Games with Table Tennis & Snooker
- ▶ Children Play area
- ▶ Hardscape & Landscape Garden
- ▶ Meditation Room (Yoga)
- ▶ Spacious Visitors Lounge
- ▶ Two Level Car Parking
- ▶ Surveillance Monitoring and recording
- ▶ Recreational Hall
- ▶ Non Addressable fire fighting System
- ▶ 10 Passenger Lift & 16 Passenger Structure Lift in each tower
- ▶ Garbage Chute
- ▶ Solar Water Heater Connection
- ▶ Reticulated Gas Connection
- ▶ 24X7 Generator Backup





LOWER LEVEL



UPPER LEVEL

3/4 B DLX 3
3/4 BEDROOM DUPLEX - TYPE 1
UNIT : 116, 118, 124



TOWER - A

TOWER - B

ROOF TOP SWIMMING POOL



F L O O R P L A N

PROJECT DETAILS

Name of Project	Green County
Location	Bolar, Mangalore
Land Size	1.32 Acres
No. of Towers	2
No. of Units	121
No. of Floor	B+G+14
Parking	Basement & Ground



AREA SPECIFICATIONS

2 BHK	1230, 1245, 1255
3 BHK	1545 TO 1640
3/4 BHK	2205 TO 2445



S P E C I F I C A T I O N

- ▶ Superior Quality Branded CP fittings for all Bathrooms and Kitchens.
- ▶ Diverter unit for all Bathrooms.
- ▶ Provision for glass partition for the wet & dry area for bathrooms.
- ▶ Branded Sanitary wares.
- ▶ 2X2 Vitrified Flooring for Living, Dining & Bedrooms, whereas antiskid Tiles for Bathrooms.
- ▶ Heavy gauge aluminum / UPVC window.
- ▶ Melamine polished designer front doors.
- ▶ Granite Kitchen platform.
- ▶ Finolex / RR / Vguard Cables.
- ▶ Legrand / Roma Modular Switches.
- ▶ Wall mounted WC with flush wall.
- ▶ A.C points, T.V Points & Telephone Points for Bedrooms including Living Rooms.





- M A S T E R P L A N**
- Gate / Entry / Exit
 - Security Cabin
 - Tower A
 - Tower B
 - Lobby Tower A
 - Lobby Tower B
 - Basement Entry
 - Roof Top Swimming Pool
 - Tennis Court
 - Basketball Court
 - Childrens Play Area
 - Landscape A
 - Landscape B





A PERFECT VIEW

LOCATION



ONGOING PROJECTS



FALNIR HEALTH CENTRE, Falnir



Landmark OXYGEN, Thokkottu

UPCOMING PROJECT



Landmark VALENCITY, Valencia