

landmark
GRAND CITY
PANDESHWAR, MANGALURU

ingress into
luxury



landmark
INFRA TECH

www.landmarkinfratech.com



landmark
GRAND CITY
PANDESHWAR, MANGALURU

Landmark Infratech presents “Grand City”, a premium residential project at Pandeshwar, Mangalore’s most sought after residential sphere. Grand City offers you a dream fusion of scenic location and urban bustle. Overlooking the panoramic view of the estuary, Grand City is conveniently located in close proximity to city’s leading malls, hospitals, schools and colleges and places of interest. Being in the nucleus of the city, Grand City offers you an easy access to the city’s Central Railway station and Service bus stand, evenings of entertainment at the leading hotels and shopping trips to the premium malls, everything is just minutes away.

The signature layout of the Grand City, with centralised AC for each flat makes it a unique one in Mangalore. In addition to kids area, a separate expanse of digital gaming for children is another highlight. Grand City offers you 14 storeys of luxurious lifestyle.

Even the best homes don’t feel homely if the location is not a convenient one. So before choosing, you make sure to consider aspects of the home’s location beyond its physical appearance alone. When Grand City offers you the best of both, what could be more ideal?

Landmark Infratech’s Grand City bestows you with the one most important quality you seek- the ability to enjoy the fine life you’ve always desired for yourself and your family.



AN IMAGINATION
IN REALITY





IT'S
A LOT
MORE THAN
JUST A HOME



landmark

GRAND CITY

PANDESHWAR, MANGALURU



Highlights

- Centralized AC
- Roof Top Swimming Pool.
- Indoor Games with Table Tennis & Snooker
- Digital Gaming Club
- Children Play Area with equipments
- Steam Bath
- Fully Equipped AC Health Club (Gym)
- Non Addressable fire fighting System.
- 2 High speed automatic elevators of 10 & 13 (Stretcher) Passenger capacity
- App based Multi Apartment Video Door Phone (MVDP)
- Smart Door Locking System
- Reticulated Gas.
- Solar Water Heater
- 2 Level Car Parking.
- 24X7 Generator Backup.
- Cable T.V. Provision.
- Surveillance Monitoring and Recording.
- Spacious Visitors Lounge





CENTRALIZED AC



POOL



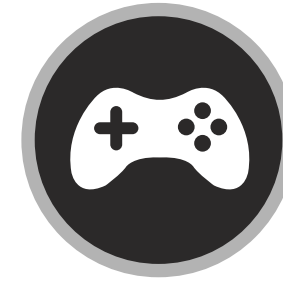
GAMES



GYM



STEAM BATH



DIGITAL GAMES



Specification

- Superior Quality Branded CP fittings for all Bathrooms and Kitchen.
- Diverter unit for all Bathrooms.
- Provision for glass partition for the wet & dry area for bathrooms.
- Branded Sanitary wares.
- 2X2 Vitrified flooring for Living, Dining & Bedrooms.
- Heavy gauge aluminium / UPVC windows.
- Melamine polished designer front doors.
- Branded electrical cables & modular switches.

DRAWING / DINING

- T.V. and telephone point.
- Branded Wash basin for dining.

BEDROOMS

- 2 way light control and night lamp.
- T.V. point, Provision for Telephone & Internet connection.





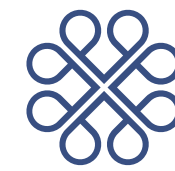
BATHROOMS

- Pressure checked plumbing and drainage lines to ensure total leak proof toilets.
- Branded concealed cistern for flushing.
- Provision for glass partition for the wet and dry area.
- Branded concealed mixer and diverter with shower.
- EWC for all bathrooms.
- Anti Skid ceramic tiles for bathroom floors.
- Provision for exhaust fan.

KITCHENS AND WORK AREA

- Adequate power points.
- Provision for fixing and connecting water purifiers near the kitchen sink.
- Plumbing and drainage connection with power point for washing machine.

TURNING YOUR DREAMS
INTO AN ADDRESS



landmark

GRAND CITY

PANDESHWAR, MANGALURU





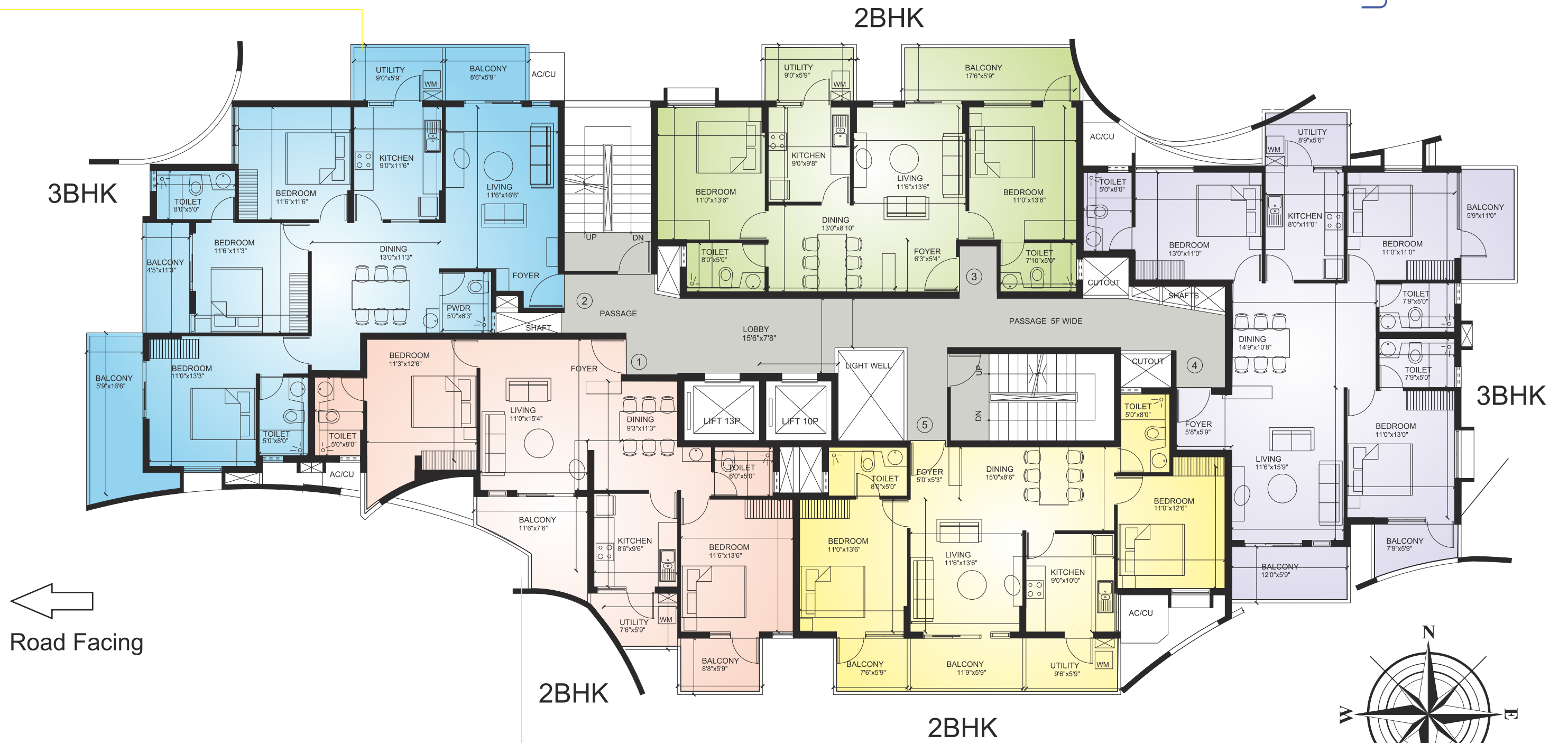
Centralized AC (VRV / VRF Tehnology)

VRV stands for Variable Refrigerant Volume, also known in the wider industry as variable refrigerant flow (VRF). A VRV / VRF system is still the only system that continuously adjusts the refrigerant volume within the system to match exactly cooling requirement in each area, for optimum comfort and maximum energy efficiency. This air conditioning system is basically large multi-split system where number of indoor units are connected to the outdoor unit and generally used for larger applications. VRV air conditioning would generally be comparable in capital cost but would quicker to install and more energy efficient to run.



landmark
GRAND CITY
 PANDESHWAR, MANGALURU

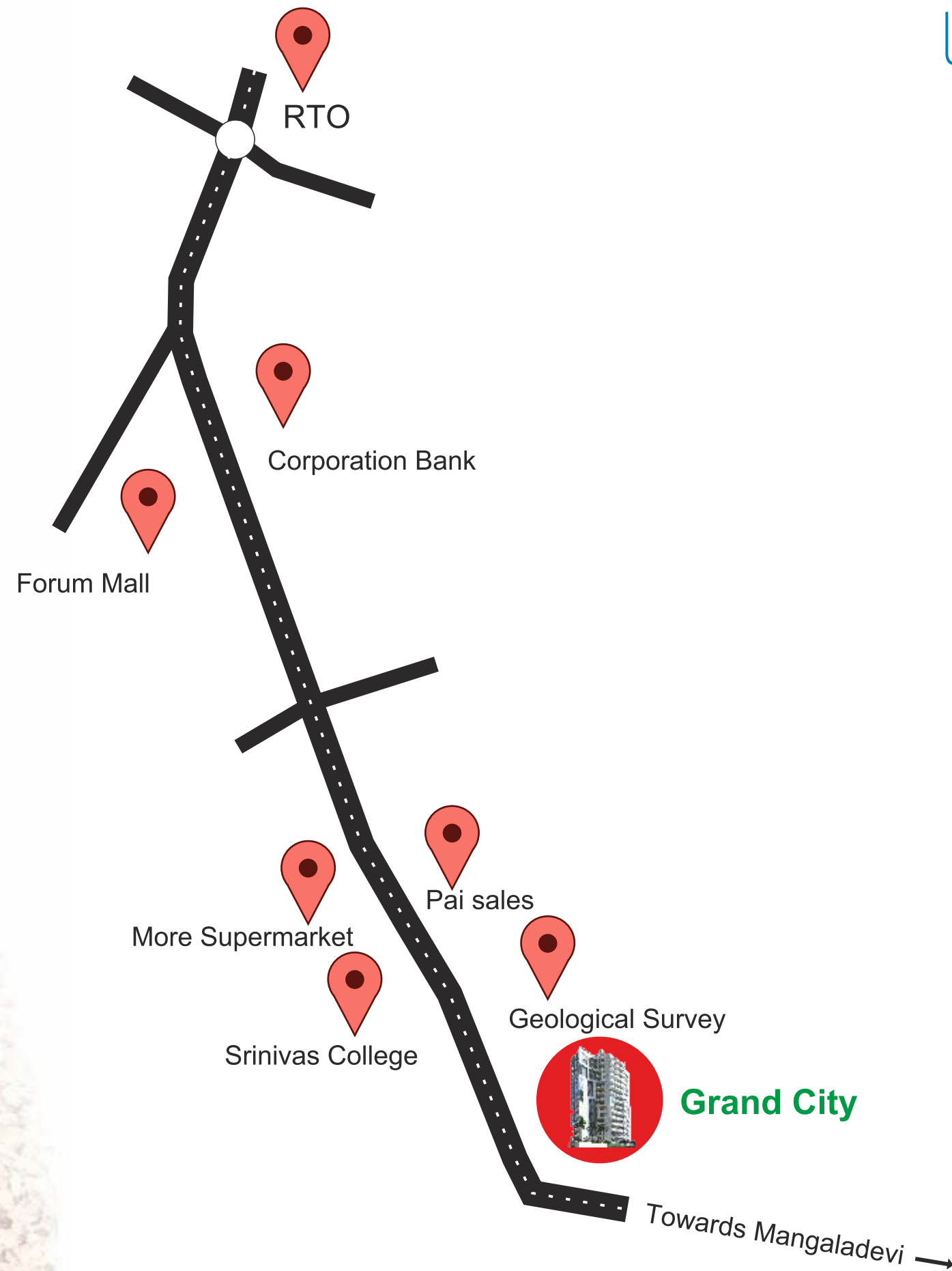
Key Plan



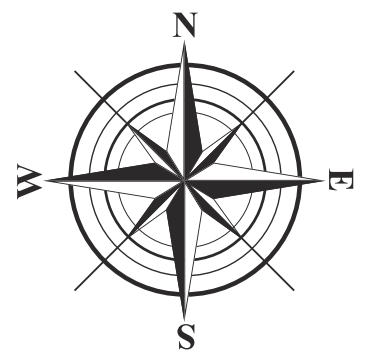
PROJECT DETAILS	
LAND SIZE	51.75 CENTS
NO. OF TOWERS	1
NO. OF UNITS	69
NO. OF FLOOR	B+G+14
PARKING	BASEMENT AND GROUND

AREA SPECIFICATION	
2 BHK (Sq.ft)	1295 to 1375
3 BHK (Sq.ft)	1640 to 1895

Location Map



Arabian Sea



ONGOING PROJECTS

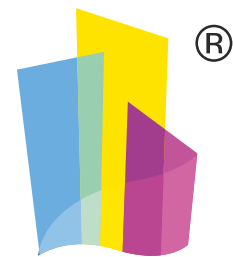


COMPLETED PROJECTS



For Enquiries Call
+91 888 066 2222

Promoters:



landmark
INFRA TECH



SS REALTY

1st Floor, "Marz Chambers", Falnir, Mangaluru. Ph: +91 824 4262222
Email: info@landmarkinfratech.com | www.landmarkinfratech.com

