



DISCOVER the best
BUSINESS slot in town !

Join the **AMBITIOUS**
team of medical
PROFESSIONALS

AYUSH 
MULTI SPECIALITY CLINIC

Landmark Ayush is set to enhance your health and wellness with 5 floors of dedicated health care at Highlands with its chosen array of medical equipments and incorporating the machines catching up with the latest advances in treatment and recuperating methods. Henceforth you need not worry about the trauma of treating the disease or getting over with health issues.



Today India is mentioned as a country where Health Tourism is sought by many nations especially the SAARC countries.

Landmark infratech has already made strides in various segments of trade and infrastructure is making modern health care now accessible to everyone at a most serene surroundings of Mangalore i.e Highlands. Henceforth you need not run around to get things done on health check ups and consultations. A panoramic collection of health gadgets and modern health care machinery would make things extremely easier for you and your family.

Advances are made in health care every day and they are important to enhance health and wellness. Every individual wishes to get best medical treatment at one go! Even Senior Citizens and those suffering from different ailments like diabetes mellitus, heart disease, etc or requiring constant health care would find it comfortable with the facilities that we are offering under one roof with reasonable health costs.

DREAM BIG
FOR A CHANGE THAT WOULD
REVOLUTIONIZE MEDICAL SERVICES IN
MANGALORE



AYUSH 
MULTI SPECIALITY CLINIC

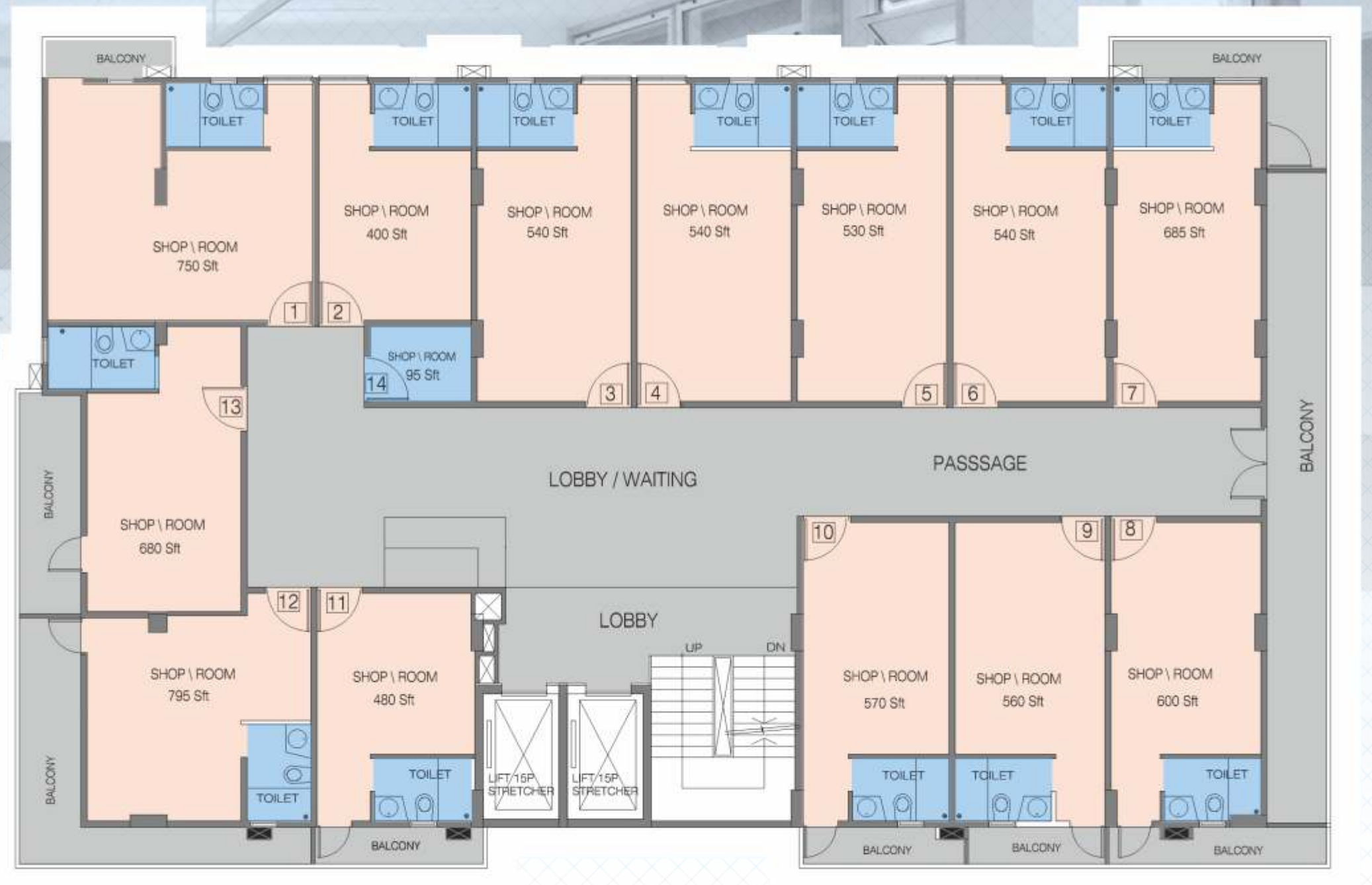
HIGH PROFESSIONAL
& Latest
DIGITAL TECHNOLOGY
Will Spread The Word Across!



LOWER GROUND FLOOR PLAN



TYPICAL FLOOR PLAN (1ST & 2ND)





An around **MEDICAL SERVICES**
set up with **24** hours assistance!

The concept of 24/7 pharmacy is appealing! when it offers all the medicines that the patients party demands it sounds well! Landmark Agush Multi Speciality Clinic will rewrite the concept itself setting new trend in Medicine dispensing and providing 24/7 service to all the clients. It is like changing city coming up with new technology driven services for better services throughout 24 hours. A pharmacy driven with excellent modes of service which will make it a household name! After all, everyone needs right medicines at the right time.



MEDICAL SERVICES will be patient friendly and full of **WELLNESS**

- EXPECTED FACILITIES**
- SUCTION MACHINES
 - STERILIZING EQUIPMENT
 - WHEEL CHAIRS
 - ELECTRIC BEDS
 - ARTHROSCOPIC EQUIPMENT
 - X-RAY MACHINES
 - HEART MONITOR PUMPS
 - ECG MACHINE
 - VENTILATORS
 - INCUBATORS MULTI PARAMETER
 - PULSE OXIMETRY
 - DEFIBRILLATOR
 - RESPIRATOR



Doctors could be successful entrepreneurs
Atul Gawande has set a record of sorts



Go **HEALTHY** and **HAPPY!**

FACILITIES WELL DRIVEN WITH LATEST MACHINES

your expertise
will optimize the services.

HIGHLIGHTS

- RCC FRAMED STRUCTURE, MASONRY PARTITIONS
- SUPERIOR QUALITY ACP/ STRUCTURAL GLAZING / WEATHERPROOF PAINTS FOR THE EXTERIOR
- HIGH SPEED AUTOMATIC (STRETCHER) ELEVATORS
- GENERATOR BACKUP WITH SOUND-PROOF ACOUSTIC ENCLOSER
- AMPLE CAR PARKING ON BASEMENT FLOORS
- INTERLOCK PAVING FOR CAR PARKING
- HEAVY DUTY INTERLOCKING FOR THE DRIVEWAYS
- PROVISION FOR SPLIT AC POINT, TELEPHONE POINT & TV POINT
- BRANDED SANITARY WARE
- BRANDED BASIN MIXER
- SUPERIOR QUALITY VITRIFIED FLOORING FOR SHOPS/ROOMS
- SUPERIOR QUALITY MODULAR SWITCHES
- GRANITE / MARBLE / VITRIFIED FLOORING FOR COMMON / SITTING AREA / STAIRCASE
- UPVC / HEAVY GAUGE ALUMINIUM WINDOWS



DENTAL FACILITY:
An experienced Dental surgeon provides procedures like Dental Extractions, RCT, Scaling / Cleaning, Fillings, Local curettage.



PHYSIOTHERAPY:
Range of physiotherapy services to assist the patients to recover from wide range of musculoskeletal pain-ful disorders. Available modalities are MWD, SWD, U/S, TENS, IFC laser therapy traction unit, magnolia.



LABORATORY SERVICES:
Trained laboratory staff are providing best services which includes painless blood withdrawal Services of one NABL accredited laboratory.



ECG SERVICES:
24hours ECG services including machine report, done by trained staff.



RADIOLOGY/X-RAY FACILITY:
X-Ray pleophos-D, 300 MA Siemens available, X-rays done on all working days during OPD hour. Sonoline G-50 U/S machine, Siemens. Ultrasounds are done once a week.



HIGH TECH OPTICAL SHOWROOM



HI TECH - X-RAY INSPECTION SYSTEMS

L O C A T I O N M A P



R E R A A P P R O V E D P R O J E C T S



PROMOTERS



1st Floor, "Marz Chambers", Falnir Mangalore. Ph: +91 824 4262222
E-mail: info@landmarkinftratech.com



FOR ENQUIRIES CALL

888 066 2222

www.landmarkinftratech.com



CREDAI
MANGALORE



SCAN QR CODE